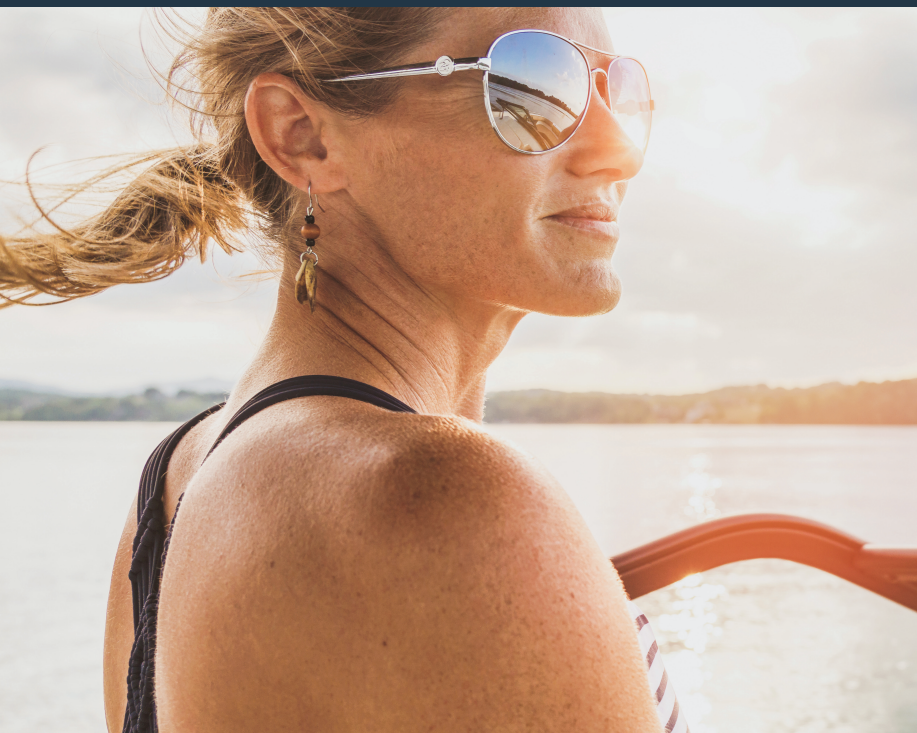


# Get Premium Jet Engine Protection. For True Peace of Mind.



Passport Premier offers comprehensive, long-term engine package protection for your new or pre-owned vessel. Even entire engine assemblies are replaced if necessary. So you can enjoy your time on the water, knowing you are covered against costly repairs for years to come.

Passport Premier lets you head out with confidence:

- Long-term coverage on over 90 major engine parts
- Covers overheating, even detonation, lots more
- Repair reimbursement includes parts and labor
- Locking in now offers assurance against inflation
- Protection cost can be rolled into your boat financing
- All benefits are transferable for higher resale value

With expert service at any manufacturer authorized facility and plan management by Brunswick, a top U.S. boat and engine seller, it's coverage you can truly count on.

PASSPORT  
**PREMIER**<sup>SM</sup>

## Comprehensive Extended Protection Benefits

### Non-Defective Engine Breakdown

Engine Sensor Failures	Carbonized Rings
Thermostat Failures	Heat Collapsed Rings
Overheating*	Scored Pistons
Preignition	Scored Cylinders
Detonation	Heat Cracked Heads
Burnt Valves	Warped Heads
Bent Valves	Heat Cracked Block
Tuliped Valves	

\*Any overheating conditions created by raw water pump and/or impeller failures or those that do not result in a Mechanical Breakdown are not eligible for Coverage under this program.

### Claim Payment Benefits

Lubricants	Hoses
Coolants	Engine Tuning
Belts	Taxes
Spark Plugs	Shop Supplies
Clamps	Haul Out
Filters	

### Service Assist

On-water towing	Pick Up/delivery
Hoist/lift-out	Lake Test
Haul Out	Sea Trial
Dockside repair call	

### Transfer Provision

All service contract plan benefits transferable on new boats

—  
Add value to your boat sale.

## Jet Engine Package Protection\*

**Controls:** All parts contained within the manual controls, neutral safety switch, shift switch, lever, control cables, wiring harness

**Direct Fuel Injection ("DFI") Components:** Air injectors, fuel injectors, air compressor, tracker valve, fuel regulator, fuel rails, check valves, mechanical fuel pump, low pressure fuel pump, high pressure fuel pump, vapor separator ("VST"), water pressure sensor

**Electrical:** Alternator, voltage regulator, stator, starter drive, starter, starter solenoid, power pack/switch box, electronic ignition module, timer base, trigger assembly, ignition coil, capacitor discharge modules ("CDM"), ignition switch, engine wiring harness, all engine electrical sensors to include distributor ignition sensor, crank position sensor, cam position sensor, coolant temperature sensor ("CTS"), rev limiter

**Engine 2 Cycle:** Crankshaft, main bearings, connecting rods, connecting rod bearings, connecting rod bolts, pistons, piston rings, wrist pins, wrist pin bearings, wrist pin lock rings, reeds, reed blocks, flywheel, seals, gaskets

**Engine 4 Cycle:** Crankshaft, main bearings, main bearing bolts, connecting rods, connecting rod bearings, connecting rod bolts, camshaft, camshaft bearings, pistons, piston rings, wrist pins, wrist pin lock rings, lifters, rocker arms, valve covers, intake valves, exhaust valves, valve seats, valve springs, valve guides, valve spring retainers, oil pump, oil filter housing, flywheel, intake air cooler, integrated oil cooler, supercharger, air regulator, seals, gaskets

**Fuel System:** Fuel injectors, injector rails, pressure regulator, low pressure pump, high pressure pump, mechanical fuel pump, fuel supply module, electronic control unit ("ECU") module, electric choke/primer, all fuel system sensors to include manifold absolute pressure ("MAP") sensor, throttle position sensor ("TPS"), manifold air temperature ("MAT") sensor, fuel/water sensor, wiring harness

**Jet Drive:** Gears, impeller shaft, drive shaft, shims, bearing carriers, bearings, pinion nut, pinion nut washer, seals, gaskets

**Oil Injection System:** Oil injection pump, oil pump drive gear and shaft, engine-mounted oil tank and cap, warning horns and lights, oil injection lines, check valves, metering system

**Steering:** Steering control helm assembly, control rack and yoke assembly, reverse gate, steering nozzle, steering cable

**Complete Assemblies:** Engine block, cylinder head(s), intake manifold, drive shaft housing and/or lower gear case housing will be eligible for reimbursement if damaged beyond repair by the failure of a covered component listed above (unless Optional Major Castings/Housings Upgrade is purchased - see your dealer for details).

\*Personal Watercraft are not eligible for Engine Package Protection.

**BRUNSWICK**  
Product Protection  
*Preserving The Dream*

The information provided in this document is intended to provide only a brief description of the benefits of the Passport Premier Extended Marine Protection. The extended service contract also has exclusions and limitations that apply to the benefits discussed in this document. For complete details as provided in the Agreement booklet (including "What is not Covered") and for costs, please see your dealer representative.

Administrator: Brunswick Product Protection Corporation, Brunswick Product Protection Corp. of Florida, 26125 N Riverwoods Blvd, Suite 500, Mettawa, IL 60045, Phone: 800.950.3808, Fax: 866.404.5831  
Obligor: Consumer Program Administrators, Inc.; in CA - Motor Warranty Services of North America, CA license #0E40891; in FL, LA and OK - Automotive Warranty Services of Florida, Inc., FL license #60023, OK license #861338; in AR and WA - National Product Care Company; all located at 175 West Jackson Blvd., Chicago, IL 60604, Phone - 800.752.6265  
PPGNSS2023JEUS